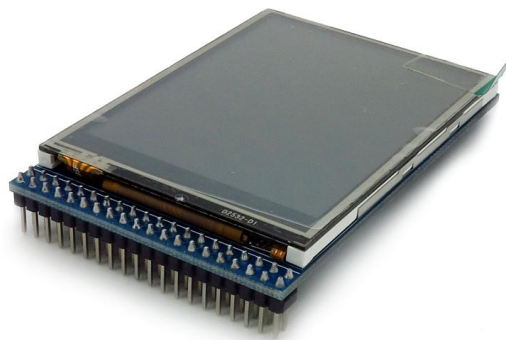


ITDB02-2.8

Overview



ITDB02-2.8 module is 2.8" TFT LCD with 65K color 320 x 240 resolutions. The controller of this LCD module is ILI9325DS, it supports 8bit data interface with 4 wires control interface. Moreover, this module includes the touch screen and SD card socket.

Features

- Compatible with 3.3/5V operation voltage level
- Compatible with UTFT library
- With SD Card Socket

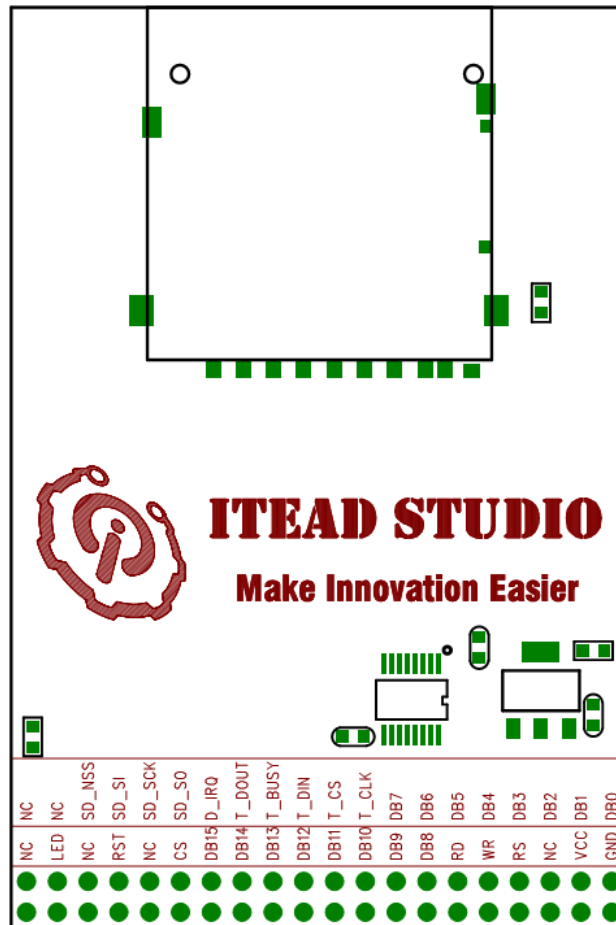
Specifications

PCB size	76mm X 50.8mm X 1.6mm
Power supply	5V DC
RoHS	Yes

Electrical Characteristics

Specification	Min	Type	Max	Unit
Power Voltage	4.5	5	5.5	VDC
Output Voltage	Target Voltage = 3.3V			
VH	3	3.3	3.6	V
	Target Voltage = 5V			
VH	4.5	5	5.5	
Output Voltage VL:	-0.3	0	0.5	V
Current Consumption	-	20	40	mA

Hardware



Bottom View

Pin Map

Pin	Type*	Description
GND	G	Ground
VCC	P	5V Power Supply pin
NC	-	No connection
RS	I	Data/Command selection
WR	I	Write signal enable, low active
RD	I	Read signal enable, low active
DB8	I	Data Bus
DB9	I	Data Bus
DB10	I	Data Bus
DB11	I	Data Bus
DB12	I	Data Bus
DB13	I	Data Bus
DB14	I	Data Bus

DB15	I	Data Bus
CS	I	Chip Selection, Low level active
NC	-	No connection
LED	P	Backlight
NC	-	No connection
DB0	-	No connection (8bit mode)
DB1	-	No connection (8bit mode)
DB2	-	No connection (8bit mode)
DB3	-	No connection (8bit mode)
DB4	-	No connection (8bit mode)
DB5	-	No connection (8bit mode)
DB6	-	No connection (8bit mode)
DB7	-	No connection (8bit mode)
T_CLK	I	Touch clock
T_CS	I	Touch chip selection
T_DIN	I	Touch data input
T_BUSY	O	Touch status
T_DOUT	O	Touch data output
T_IRQ	O	Touch interrupt
SD_SO	O	SD MISO
SD_SCK	I	SD SCK
SD_SI	I	SD MOSI
SD_NSS	I	SD NSS
NC	-	No connection
NC	-	No connection

* : P: Power supply; G:Ground; I:Input; O:Output;

The ITDB02_2.8 uses the ILI9325DS controller , it support 8bit data interface.
The touch IC is TSC2046.

Revision History

Rev.	Description	Release date
v1.0	Initial version	2012-4-25