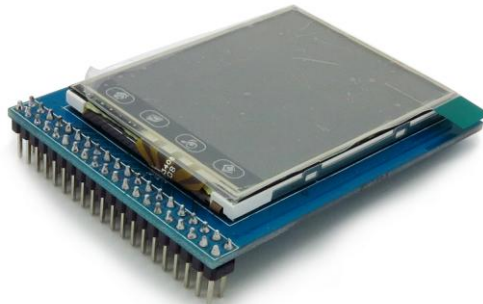


ITDB02-2.2

Overview



ITDB02-2.2 module is 2.2" TFT LCD with 65K color 176 x 220 resolutions. The controller of this LCD module is HX8340-B(T), it supports 8bit data interface with 4 wires control interface. Moreover, this module includes the touch screen and SD card socket.

Specifications

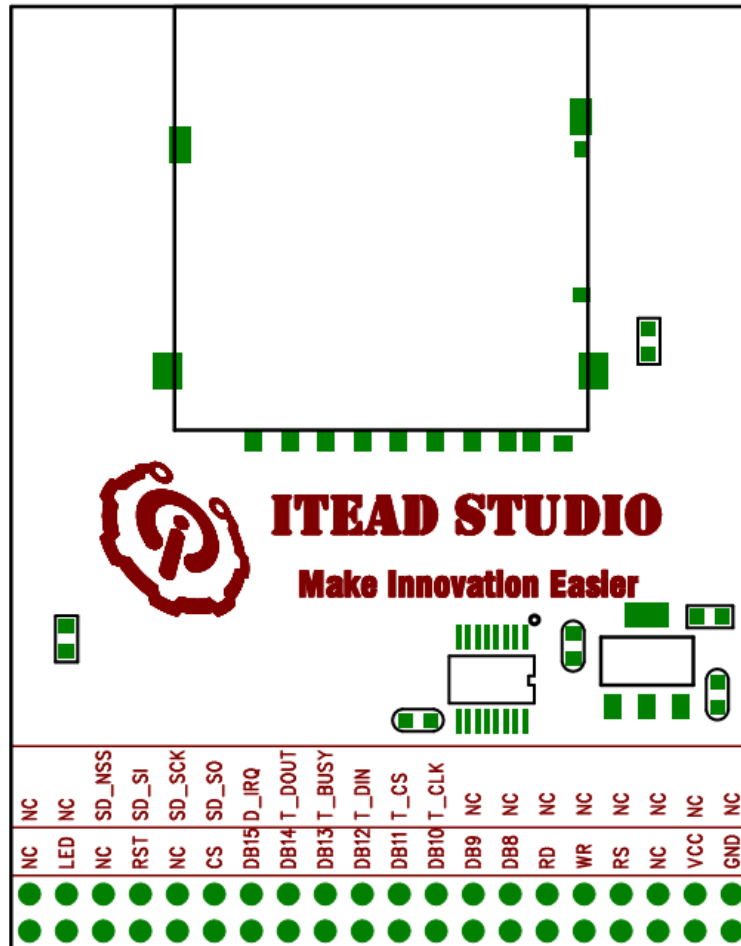
PCB size	64.8mm X 50.8mm X 1.6mm
Power supply	5V DC
RoHS	Yes

Electrical Characteristics

Specification	Min	Type	Max	Unit
Power Voltage	4.5	5	5.5	VDC
Output Voltage	Target Voltage = 3.3V			
VH	3	3.3	3.6	V
	Target Voltage = 5V			
VH	4.5	5	5.5	V
Output Voltage VL:	-0.3	0	0.5	V

Current Consumption	-	20	40	mA
---------------------	---	----	----	----

Hardware



Bottom View

Pin Map

Pin	Type*	Description
GND	G	Ground
VCC	P	5V Power Supply pin
NC	-	No connection
RS	I	Data/Command selection
WR	I	Write signal enable, low active
RD	I	Read signal enable, low active
DB8	I	Data Bus
DB9	I	Data Bus
DB10	I	Data Bus
DB11	I	Data Bus
DB12	I	Data Bus

DB13	I	Data Bus
DB14	I	Data Bus
DB15	I	Data Bus
CS	I	Chip Selection, Low level active
NC	-	No connection
LED	P	Backlight
NC	-	No connection
NC	-	No connection
NC	-	No connection
NC	-	No connection
NC	-	No connection
NC	-	No connection
NC	-	No connection
NC	-	No connection
NC	-	No connection
T_CLK	I	Touch clock
T_CS	I	Touch chip selection
T_DIN	I	Touch data input
T_BUSY	O	Touch status
T_DOUT	O	Touch data output
T_IRQ	O	Touch interrupt
SD_SO	O	SD MISO
SD_SCK	I	SD SCK
SD_SI	I	SD MOSI
SD_NSS	I	SD NSS
NC	-	No connection
NC	-	No connection

*: P: Power supply; G:Ground; I:Input; O:Output;

The ITDB02_2.2 uses the HEX8340-B(T) controller.

Revision History

Rev.	Description	Release date
v1.0	Initial version	2011-12-26